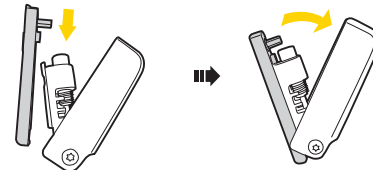
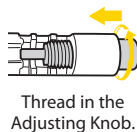


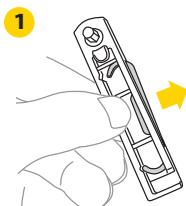
Fits multi-speed chains, including Campagnolo® 11 speed.

### HOW TO STORE LINK 11 FOLDING CHAIN TOOL

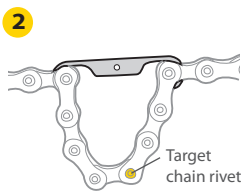


1. Chain Tool Grip
2. Rivet Anvil of hollow pin
3. Adjusting Knob and Chain Pin Breaker
4. Lever with 4mm Allen Key
5. Chain Hook

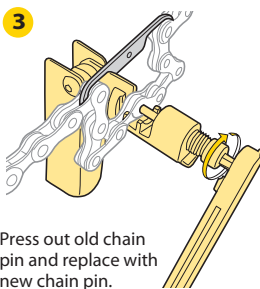
### HOW TO REPLACE CHAIN PIN



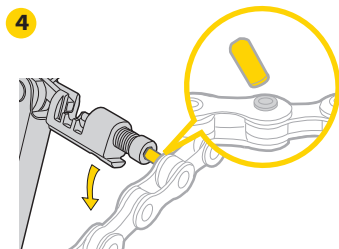
Remove chain hook from lever.



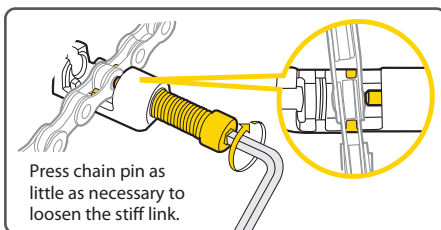
Hook chain and hold the target chain rivet in center position.



Press out old chain pin and replace with new chain pin.

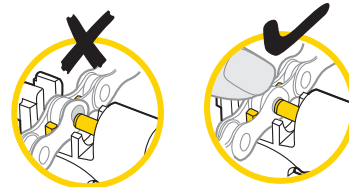


Snap off new chain pin guide.

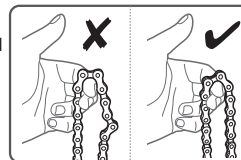


### WARNING

1. When pressing in the chain pin, push down on the top of the chain to keep it fully engaged in the chain tool cradle. Make sure the press pin of the chain tool is centered against the chain pin.



2. Inspect chain rivet again and be sure chain links can bend freely after replacement.

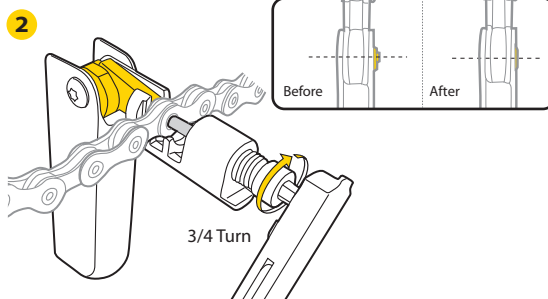
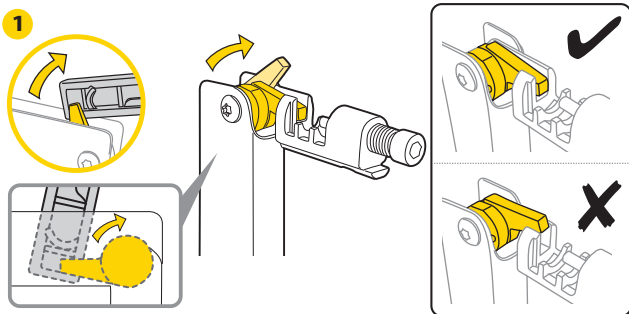


### MAINTENANCE

1. Lubricate and maintain tool with Teflon® based lubricant when needed.
2. To prevent rusting, keep tool dry.

### INSTALLATION INSTRUCTION FOR CAMPAGNOLO® 11-SPEED HOLLOW CHAIN PIN

After pressing the special replacement pin into Campagnolo® 11-Speed chain and breaking off the guide portion, the break off end of the chain rivet is required to be peened to prevent chain failure.



### WARRANTY

2-year Warranty: All mechanical components against manufacturer defects only.

#### Warranty Claim Requirements

To obtain warranty service, you must have your original sales receipt. Items returned without a sales receipt will assume that the warranty begins on the date of manufacture. All warranties will be void if the product is damaged due to user crash, abuse, system alteration, modification, or used in any way not intended as described in this manual.

\* The specifications and design are subject to change without notice. Please contact your Topeak dealer with any questions. For USA customer service call: 1-800-250-3068 / [www.topeak.com](http://www.topeak.com)

\* Campagnolo® is a registered trademark of Campagnolo S.r.l.

\* Teflon® is a registered trademark of DuPont.

Copyright © Topeak, Inc. 2012 M-TT2548-GB 11/12